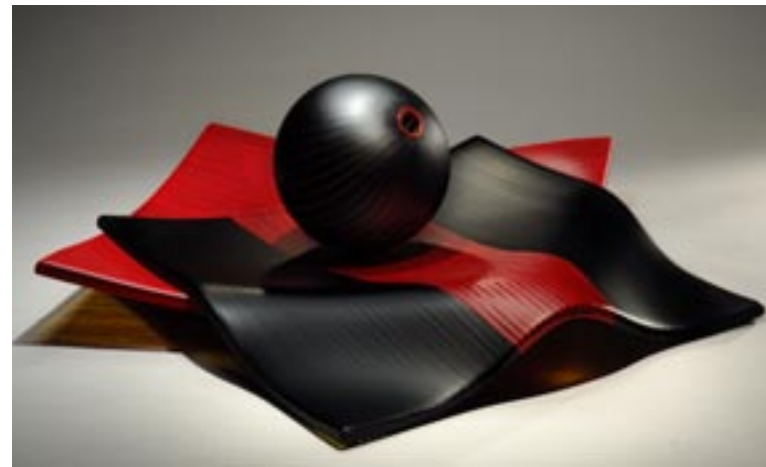




KEESING *Two Views (diptych)*, 2007, oil on canvas, 52" x 60"



KLEIN *Returning V*, 2007, kilnformed and blown glass, 27" x 27" x 8"



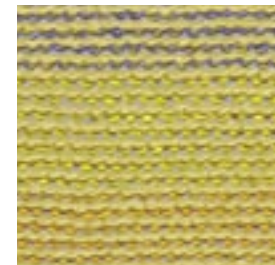
KLEIN *Sample Balance Vanilla Black*, 2007, kilnformed and blown glass, 19" x 19" x 8"



ELLIS *Elysium #2*, 2007, encaustic, oil and paper on canvas, 72" x 60"

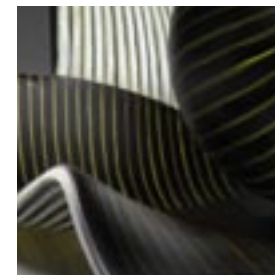


ELLIS *Currents #29*, 2006, encaustic, oil, acrylic and collage on board, 58" x 46"



Madeleine Keesing

Madeleine Keesing developed her unique approach to the layered construction of minimalist paintings more than 30 years ago. In the intervening years, her style has evolved to become richer and more complex, but her basic method of paint application—the careful positioning of minute droplets of paint in repetitive rows—has remained the same. Though from a distance her paintings appear to be largely monochromatic, from a closer perspective the superimposed rows of brilliant color create a vibrant sensory experience. Keesing has shown her work in solo exhibitions around the country since 1970. Her work is in several museum collections including the Guggenheim in New York.



Steve Klein

Glass artist Steve Klein's recent work seeks to explore and appreciate memories, consequences and the fragile state of balance. He gives his sometimes malleable, sometimes brittle medium a voice in the work through a process of negotiation between his idea, the material, heat and gravity, ultimately bringing the materials and forces together into a beautifully resolved piece. He designs with the most elemental shapes—squares and spheres—further defining them with curving, carved lines and fused strata of clear and colored glass. With work in major glass museums, Klein is a prominent figure in the world of art glass and in demand as a workshop instructor. He has taught in studios and schools throughout the world.



Brad Ellis

Brad Ellis has compiled for this exhibition a body of paintings from two different series of work that he continues to explore. To create the "Elysium" and "Currents" series, Ellis employs the ancient medium of encaustic paint. His method of painting with this wax-based medium involves a lengthy process of alternating layers of encaustic, oil and collage elements to create striking textural surfaces and compelling abstract imagery. Ellis's artwork is included in many private and corporate collections throughout the country. He lives and works in Dallas, Texas.

LewAllenContemporary LLC

129 West Palace Avenue
Santa Fe, New Mexico 87501



KEESING *Undercurrent*, 2007, oil on canvas, 60" x 60"

tel 505.988.8997 fax 505.989.8702
www.lewallencontemporary.com
info@lewallencontemporary.com

Full set of images posted on website.

Cover:
KLEIN *Exploration 110-Maquette 15 (detail)*, 2007, kilnformed and blown glass, 15" x 15" x 6"
KEESING *Rufus (detail)*, 2007, oil on canvas, 48" x 36"
ELLIS *Currents #28 (detail)*, 2006, encaustic, oil, acrylic and collage on board, 58" x 46"

Return Service Requested

PRESORT STD.
US POSTAGE
PAID
CPC MAIL

Steve Klein



Madeleine Keesing



Brad Ellis



LINEAR VARIATIONS
November 2-December 2, 2007

LewAllenContemporary
Reception: Friday, November 2, 5:30-7:30PM